

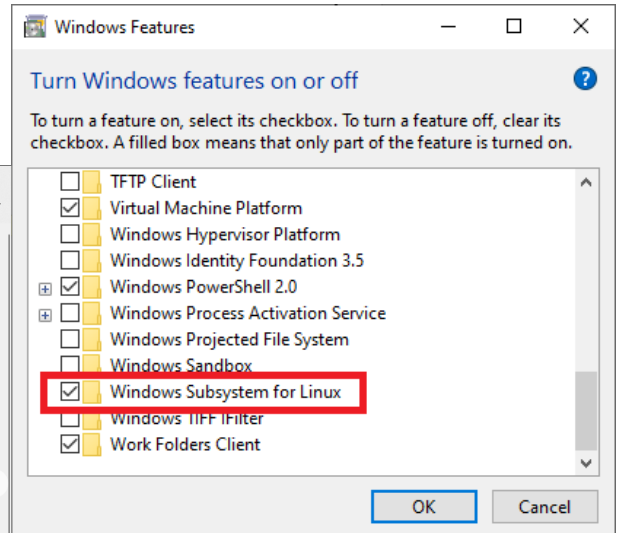
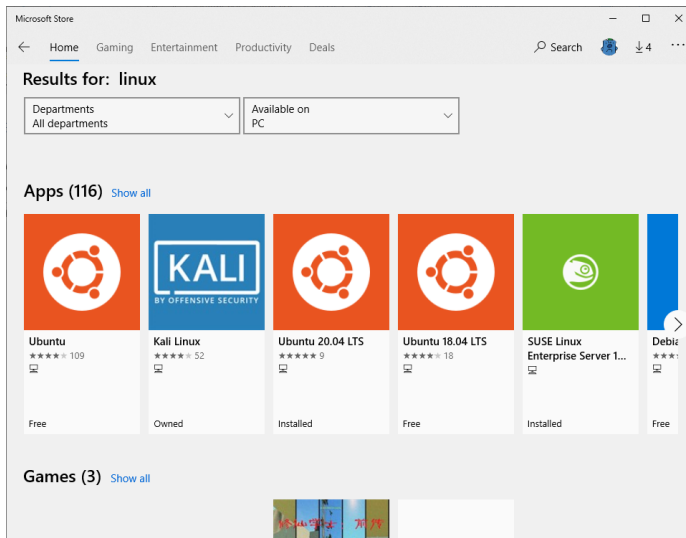
Get started with Linux



Windows subsystem for Linux

To use Linux on Windows 10 you will need to enable the subsystem in Windows Features

You can then search the store for one or more versions to install



You can then treat your Linux distro like any app. Add to the Start menu, Create a shortcut, type in the search box etc.



```
john@COREi5: ~
Welcome to Ubuntu 20.04.1 LTS (GNU/Linux 4.4.0-19041-Microsoft x86_64)

 * Documentation:  https://help.ubuntu.com
 * Management:    https://landscape.canonical.com
 * Support:       https://ubuntu.com/advantage

System information as of Wed Oct 14 11:42:54 BST 2020

System load:  0.52      Processes:      7
Usage of /home: unknown  Users logged in:  0
Memory usage: 35%      IPv4 address for eth0: 192.168.0.10
Swap usage:   0%

0 updates can be installed immediately.
0 of these updates are security updates.

This message is shown once a day. To disable it please create the
/home/john/.hushlogin file.
john@COREi5:~$
```